

# Blairstown Police Department Speed Survey Results

Maple Lane at Haldiman Lane 5/15/2009 7:00 AM to 6:00 PM

Posted Speed Limit: 30 MPH

Average Speed: 32 MPH

Total Number of Vehicles: 237

Highest Speed: 42 MPH

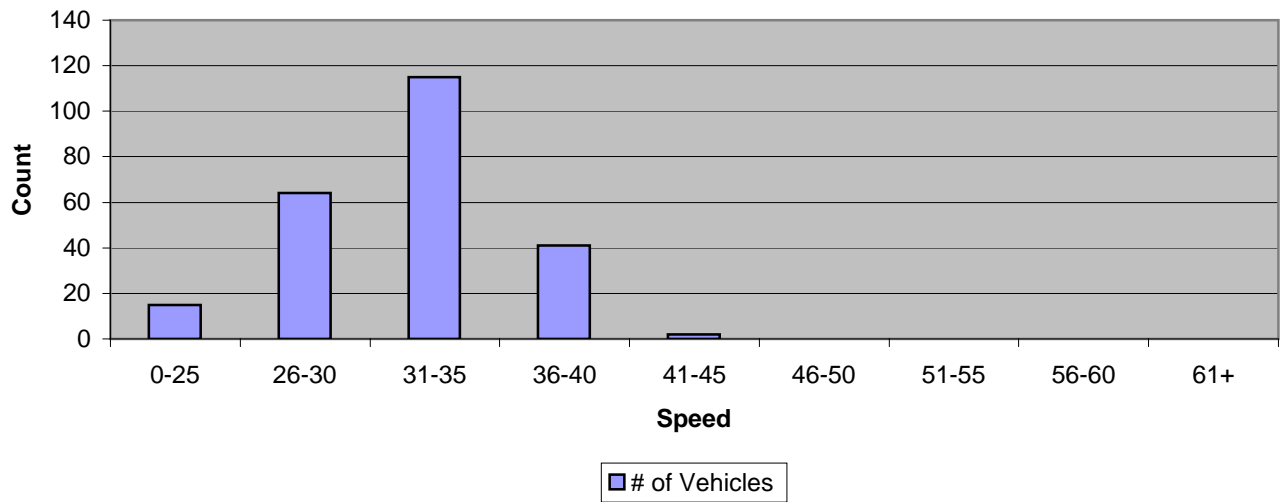
Number Above Speed Limit: 158

50th Percentile: 32 MPH

Percentile Exceeding Speed Limit: 66.7%

85th Percentile: 36 MPH

### Count vs. Speed



### Count vs. Hour

